



Follow us on social media



[WWW.TROMOX.COM](http://WWW.TROMOX.COM)

### Tromox Technology Co.,Ltd

RM 901,BLDG 8, China AI Town, Wenyi West Road,  
Hangzhou,China.

E-mail: [info@tromox.com](mailto:info@tromox.com) / TEL: +86-571-88556818



• The pictures in this manual are for reference only, please refer to the actual product.

# ABOUT US



TROMOX focuses on the new and green energy intelligent transportation solutions for the urban youth and strives to create a unique way for the new generation to show their personality. With its own independent core technology, TROMOX aims at breaking boundaries and leading young riders around the world to discover new way of traveling and meanwhile exploring the fun.

## Vision:

***To become a global leader in new energy mobility***

## Mission:

***Intelligent technology makes traveling full of passion***

## The core value of the brand:



***Unconventional***



***Interconnected***



***Passionate***

## TEAM STRENGTH

***Independent R&D  
Team***

***European Design  
Team***

***Professional Digital  
Marketing Team***





***Smart Light Weight Electric Motorcycle***  
***Premium•Next Gen***

Born for the convenience for urban citizens, UKKO S fully satisfies their desire for high-speed premium electric motorcycles. It reduces the pollution that fuel-based motorcycles cause to the living environment and creates a smart riding lifestyle with cutting-edge intelligent technology.

# The Silent Strike



# UKKO S

NFC))

APP

**100** km/h  
Max speed

**110** kg  
Net weight

**160** km  
Mileage (30km/h under lab test conditions)



## Dashboard

Full-fit TFT true color screen with 12.5 million pixels gives you richer colors and a more detailed display effect.



## Breathing light

After charging, the inductive breathing light stays on and flashes when another UKKO S vehicle approaches within 2km, allowing you to meet more fellow UKKO S owners.



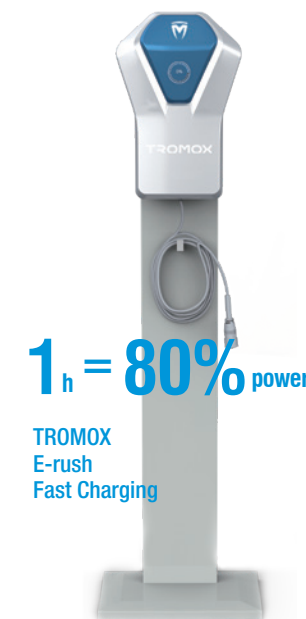
## Riding recorder

Front and rear cameras

## 4000W mid-positioned motor

A high performance, 4000W mid-positioned motor integrates the first-stage deceleration and second-stage drive, which instantly turns on the rampage mode.

Climb up a maximum 22° slope with greater low-speed torque, faster acceleration, and better climbing ability



**1<sub>h</sub> = 80% power**

TROMOX  
E-rush  
Fast Charging



TROMOX EZgo battery solution



TROMOX APP



# MINO-B

Light Electric Motorcycle for Wild Fun

APP



90 km

Mileage (30km/h under lab test conditions)

71 kg

Net weight

## POWER, FULL OF PASSION

The mid-mounted permanent magnet synchronous motor has a peak power of 2.5kw, which maintains the front and rear balance to the greatest extent, and is less impacted on bumpy roads. It is better in terms of handling, stability and passability.



1.2 kw  
RATED POWER



1800 RPM  
RATED SPEED



15°  
CLIMBING ANGLE



2.5 kw  
PEAK POWER



96 %  
ENERGY EFFICIENCY  
TRANSFORMATION



### LED Headlight with protection bar

Tromox family style LED headlight balances low energy consumption with powerful lighting systems so that it has a high visibility on the road.



### Intelligent VA stereo screen with auto sensing

Smart VA stereo screen with auto-sensing function, timely learning the vehicle status.



### Press Start



12-inch off road tyres offer a strong grip and great performance in all terrain conditions.



# MINO

Mini Electric Motorcycle for City Play

68<sub>cm</sub>

Seat height

68<sub>kg</sub>

Net weight

90<sub>km</sub>

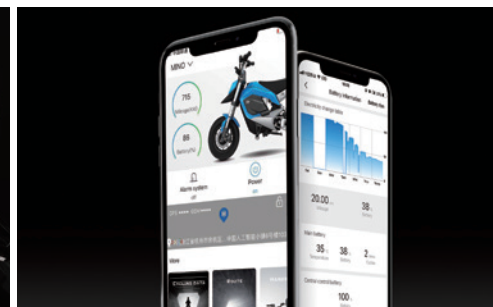
Mileage (30km/h under lab test conditions)

APP



Energy, swap in seconds.

MINO's battery is easy to carry and can be taken off and charged through the household power supply.



TROMOX APP

Get the status of your Mino anytime and anywhere.



Aluminum Parts

Aluminum alloy rear fork, aluminum alloy handle, aluminum alloy upper and lower joint plate, the whole vehicle is as light as 68Kg.

Automotive-standard high energy density battery cell, brings you everywhere around the city!



## TROMOX's BMS - Battery Management System



OVERCHARGE PROTECTION



SHORT CIRCUIT PROTECTION



OVER-CURRENT PROTECTION



TEMPERATURE PROTECTION



OVER DISCHARGE PROTECTION



BATTERY EQUALIZATION



MOS ERROR PROTECTION



PRE-DISCHARGE PROTECTION

High Efficiency Disc Brake System  
Makes Your Braking More Efficient

The 180mm disc brakes of both front and rear wheels are equipped with new single-cylinder parallel calipers. Comparing with the floating calipers of the same specification, it greatly improves the braking performance of the whole vehicle with accurate and stable braking, and it is much safer for riding.



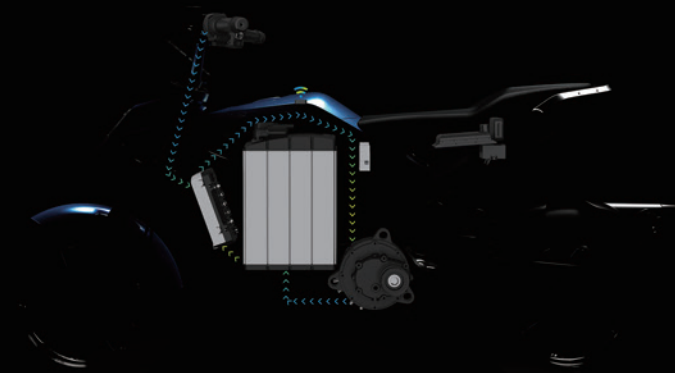
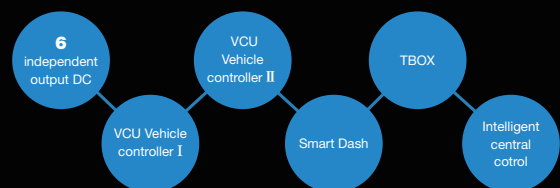




#### Unmanned remote control chassis module

Development of safe, reliable, flexible, and easy-to-use driverless chassis and vehicle solutions

#### The underlying technology-three core electric systems Automobile-level CAN system



## AFTER MARKET ACCESSORIES



Full face helmet



Half helmet



Baseball cap



Riding glove



Backpack



Cycling backpack



Hoodie



T-shirt



Side rack



Saddlebag



Rear rack



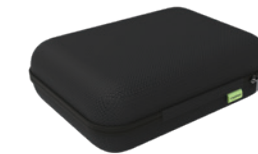
Rear pedal



Bike cover



Key chain



Charger bag



Crash bar

Born For   
Cool Riding

# UKKO S

## COLOR SCHEMES



Youth blue



Space grey



Tango orange



Knight black

## SPECIFICATION

	UKKO Basic	UKKO Standard	UKKO Premium
Size (L×W×H)	1820mmx800mmx1035mm	1820mmx800mmx1035mm	1820mmx800mmx1035mm
Wheelbase	1290mm	1290mm	1290mm
Front shock absorber	Inverted spring hydraulic damping type	Inverted spring hydraulic damping type	Inverted spring hydraulic damping type
Rear shock absorber	Middle spring damping type	Central spring integral air bag damping type	Middle spring external air bag damping type
Tyre	Front: 100/80-14 Rear: 120/70-14	Front: 100/80-14 Rear: 120/70-14	Front: 100/80-14 Rear: 120/70-14
Braking system	CBS	CBS	ABS
Rear fork	Aluminum alloy, double swing arm	Aluminum alloy, single swing arm	Aluminum alloy, single swing arm
Drive	Chain	Belt	Belt
Intelligence system	4G VCU	4G VCU	4G VCU
Dashboard	VA screen	TFT screen	TFT screen
Motor	4000W with single-reduction gearbox, peak 8000W	4000W with single-reduction gearbox, peak 8000W	4000W with single-reduction gearbox, peak 8000W
Controller	FOC	FOC	FOC
Battery	72V55Ah	72V55Ah	72V55Ah
Charger	10A	10A	15A
Camera	NO	NO	Double cameras

# MINO-B

## COLOR SCHEMES



Youth blue



Forest green



Silver grey

## SPECIFICATION

Size (Length×Width×Height)	1620mmx725mmx950mm	Brake System	Hydraulic Brake	Battery	18650 Lithium
Wheel Base	1120mm	Intelligent System	Optional	Max Speed	45km/h(EEC)
Net Weight	71kg	Shock Absorber	Front: Converted/Spring oil damped type Rear: Central/Spring oil damped type	Climbing Capacity	15° (27/100)
Loading Capacity	100kg	Tyre	Front: 90/80-12 Rear: 90/80-12	Acceleration	10s (0~100m)
Transmission Mode	Chain Drive	Motor	Mid-drive motor	Range Per Charge	90km (30km/h,60V31ah)
Battery Voltage	60V31Ah/60V26Ah			Rated Power	1200w
Torque	110N·m			Peak Power	2500w
				Charge Time	6A/4.3h(60V26Ah)

# MINO

## COLOR SCHEMES



Youth blue



Modern grey



Freedom white



Mysterious black



Bright purple

## SPECIFICATION

Size (Length×Width×Height)	1500mmx730mmx935mm	Brake System	Hydraulic Brake	Battery	18650 Lithium
Wheel Base	1020mm	Intelligent System	Intelligent Control VCU	Max Speed	45km/h(EEC)
Net Weight	68kg	Shock Absorber	Front: Converted/Spring oil damped type Rear: Central/Spring oil damped type	Climbing Capacity	15° (27/100)
Loading Capacity	100kg	Tyre	Front: 90/90-10 Rear: 100/80-10	Acceleration	10s (0~100m)
Transmission Mode	Chain Drive	Motor	Mid-drive motor	Range Per Charge	90km (30km/h,60V31Ah)
Battery Voltage	60V31Ah/60V26Ah			Rated Power	1200w
Torque	110N·m			Peak Power	2500w
				Charge Time	6A/4.3h(60V26Ah)